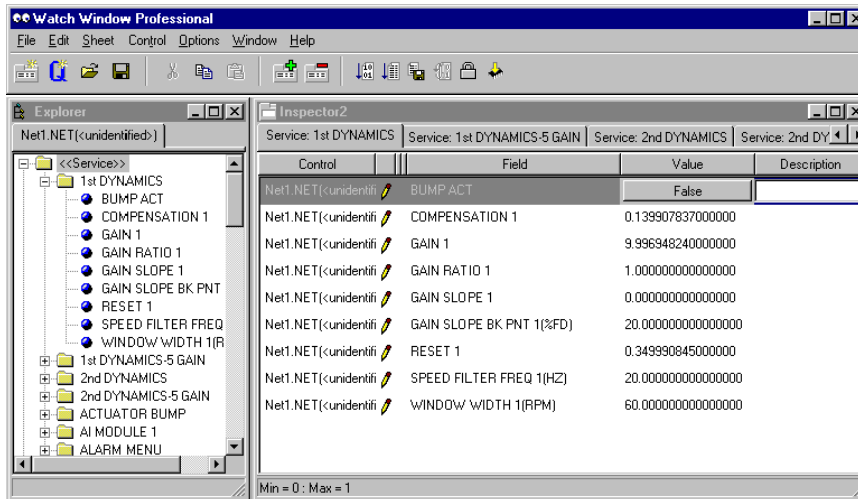


# Watch Window Professional

## and Watch Window II Professional



- Powerful troubleshooting tool for custom Woodward controls
- Variable monitoring and tuning
- Tunable variable upload/download
- Program loading
- Familiar Windows interface

### Applications

Watch Window Professional and Watch Window II Professional are service tools designed for technicians and engineers applying or maintaining custom Woodward control systems. They replace many of the meters and screwdrivers of yesterday. Watch Window Professional provides serial connectivity to 723PLUS, 828, AtlasPC™, and MicroNet™ controls. Watch Window II Professional provides Ethernet connectivity to AtlasPC and MicroNet controls that support Ethernet OPC.

### Description

The Watch Window Professional interfaces provide advanced capabilities for custom controls or for technicians desiring a higher capacity to customize the interface than that provided by Watch Window Standard (see product spec 03202).

Watch Window II Professional is the Ethernet-enabled version of Watch Window Professional. It is an OPC client that functions with Woodward's OPC server, which is available on Woodward AtlasPC™ and MicroNet™ controls with Ethernet OPC (supported with Intel Pentium® CPU).

The Watch Window Professional interfaces are typical Microsoft Windows® applications that provide a powerful and intuitive interface. The menu structures are familiar to Windows users. Variable navigation is provided through the Explorer window similar to the Explorer in Windows.

The Watch Window Professional interfaces perform three primary functions:

- **Monitoring and Tuning of Control Variables**—Watch Window Standard allows the user both to monitor selected system variables and to adjust tunable variables from the PC.
- **Management of Configuration and Set Points**—Watch Window Standard can upload or download all tunable and configuration variables from the control system. This feature allows a user (e.g., fleet owner, distributor, packager) to upload (and save) all tunable parameters from one control and download the same settings to other controls for similar engine configurations.
- **Program Loading** (Watch Window Professional only)—Watch Window provides services to download a new program to the control.

Watch Window presents variables in a tabular format. Variables are organized into one or more “sheets” of information, and sheets are grouped into “Inspectors”. Multiple Inspectors can be created, each with useful parameters for various troubleshooting or tuning procedures. The user can toggle between Inspectors or sheets depending on the task being performed.

## Specifications

---

### System Requirements

The minimum system requirements are a PC with:

- an Intel Pentium® 133 MHz processor
- 32 MB of RAM memory
- Microsoft Windows® 95 or Windows 98 (with DCOM95, provided by Microsoft), Windows NT® 4.0 (Service Pack 1), or Windows 2000 or higher (Windows NT or Windows 2000 preferred)
- Microsoft Internet Explorer 4.0 or higher

Use of a system that does not meet these requirements will in most cases degrade the performance.

### Communications

Watch Window Professional communicates with the control through RS-232/RS-422 cable connections (sold separately). Watch Window II Professional communicates with the control through a TCP/IP/Ethernet network connection.

### Download and Install Procedures

1. The install software may be downloaded for free from the Woodward website ([www.woodward.com](http://www.woodward.com)). Select “Industrial”, then “Product Lines”, and then “Software”.
2. Alternatively, a CD-ROM can be provided with the install software for a small fee.
3. Run Setup.exe on the computer on which you want to install Watch Window.
4. Contact your local Woodward representative to obtain a license to authorized the Watch Window Professional software.
5. From the same website, follow the instructions for Software Authorization.

**Note**—Although the install must be done on the target computer, the Internet connection to Woodward and software authorization may be done from any computer. Call your local representative if you need assistance.

### Running Watch Window

Once Watch Window is installed, full on-line help is available within Watch Window. The default installation location can be found by clicking the Start button on the main menu bar and then clicking the Programs menu item. Look for an icon called WOODWARD WATCH WINDOW PROFESSIONAL.



PO Box 1519, Fort Collins CO, USA 80522-1519  
 1000 East Drake Road, Fort Collins CO 80525  
 Tel.: +1 (970) 482-5811 ♦ Fax: +1 (970) 498-3058  
[www.woodward.com](http://www.woodward.com)

#### Distributors & Service

Woodward has an international network of distributors and service facilities. For your nearest representative, call the Fort Collins plant or see the Worldwide Directory on our website.

This document is distributed for informational purposes only. It is not to be construed as creating or becoming part of any Woodward Governor Company contractual or warranty obligation unless expressly stated in a written sales contract.

© Woodward 2000, All Rights Reserved

For more information contact:

2008/8/Fort Collins