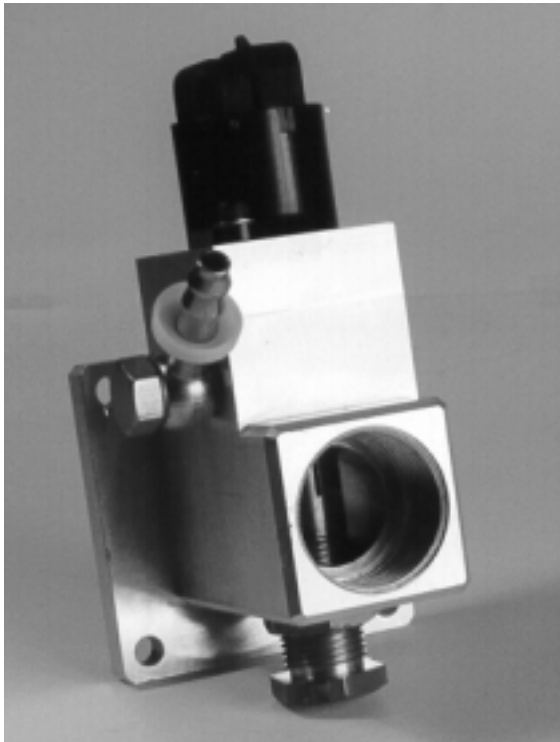
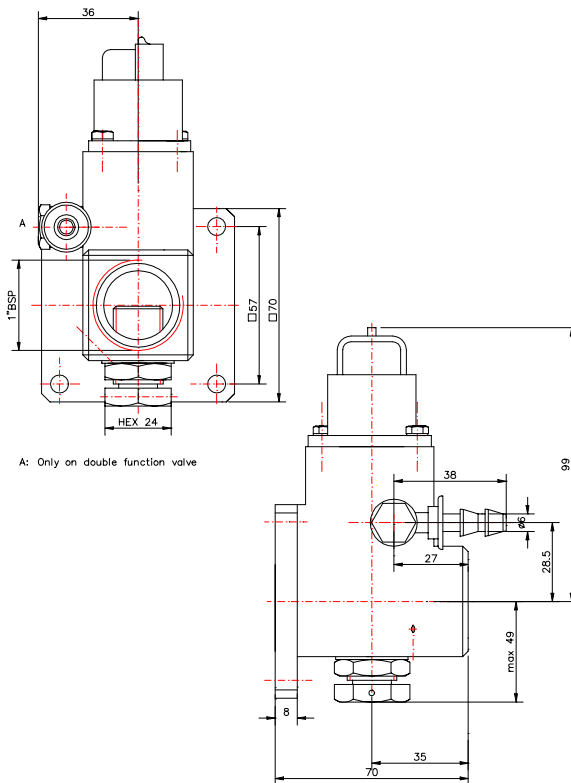


# Lambda Control Valve / Double Function Valve



Gas Trim Valve

NA and TCI engines



- Designed for direct mounting to the D100 gas mixer.
- Suitable for engines running on gaseous fuels in on-highway, industrial and power generation applications.
- Suitable for naturally aspirated and turbocharged intercooled engines.
- Main gas trim valve for lambda control.

## Additional as Double Function Valve

- Extra function as idle gas trim valve for lambda control at idling.
- Specifically designed for on-highway applications.
- Hard anodized housing and surlon coated piston.

# LAMBDA CONTROL VALVE / DOUBLE FUNCTION VALVE

## Specifications of 3/4" and 1" valve

Piston movement: by stepper motor  
Operating temperature: -40 to +125°C

### 3/4" valve

- main gas inlet: 3/4" BSP
- max. main gas flow: 35 to 55 m<sup>3</sup>/h (TCI)

### 1" valve

- main gas inlet: 1" BSP
- max. main gas flow: 60 to 90 m<sup>3</sup>/h (TCI)

### Additional for Double Function Valve

- secondary gas inlet: 1/8" BSP
- max. sec. gas flow: 6.5 m<sup>3</sup>/h @ 100 kPa (14 psi) overpressure

Specifications subject to change without notice

The Lambda Control Valve and the Double Function Valve are designed to mount directly to a gas mixer (e.g. D100 gas mixer). Both valves have a main gas trim function resulting in optimal lambda control. The Double Function Valve has an extra function as idle gas trim valve, which ensures good performance at idling.

The Lambda Control Valve and the Double Function Valve cover an engine power range of 70-275 kW (NA and TCI).

Main office:  
Woodward Automotive Products  
102 Mitchell Road  
Oak Ridge, TN 37830, USA  
Phone: 865-425-7300  
Fax: 865-425-7301  
E-mail: rblack@woodward.com

Europe:  
Woodward Automotive Products Europe  
Innsbruckweg 116  
3047 AH Rotterdam, The Netherlands  
Phone: 31 (0)10 262 0401  
Fax: 31 (0)10 262 0402  
E-mail: jtaal@woodward.com

[www.woodward.com](http://www.woodward.com)

