



easYlite-200

Remote Annunciator

For e.g. NFPA110
Applications

APPLICATIONS

The easYlite-200 is designed to remotely display the status of a Genset control system through a CAN bus or a Modbus RS-485 interface. The easYlite-200 may be used in applications where a remote status indicator is required, which is directly controlled by the generator control unit.

The annunciator provides 16 configurable LEDs. Up to two annunciators can be interfaced with one easYgen. Three colors (Amber, Green and Red) are available for each LED indication. The user may assign either blink or illuminate should an alarm status change.

The monitored status are transmitted from the easYgen to the easYlite-200. The easYlite-200 LEDs change their state if the assigned warning / alarm condition occurs or the status conditions change.

The annunciator is equipped with self-diagnostic checks and status LED to indicate the connection and LED lamp status to ease the troubleshooting.

The easYlite-200 is equipped with a relay to operate an external alarm horn or to signal connection status.

The unit is configured with a PC via USB interface using ToolKit-SC service tool.

DESCRIPTION

I/Os

- One configurable relay output
- CAN bus serial interface
- RS-485 serial interface
- USB configuration interface

Features

- Up to 16 configurable LED lamps (amber, green, red)
- Up to 2 easYlite-200 can be connected to an easYgen
- RS-485 and CAN bus communication interfaces (both on-board, connects either/or to the easYgen)
- Connection status indicator LED (green)
- 1 lamp test button
- 1 horn silencing button
- Relay output for operating external alarm horn or to signal connection status
- 12/24 Vdc power supply
- Flush mounting to panel front
- Alarm text configuration via ToolKit-SC
- Connects to ToolKit SC via USB service port
- Compact size to fit confined space
- IP65 for outdoor installation

- Annunciator for genset control system
- Fully compatible with new easYgen-100/1000 Series
- Freely configurable LEDs
- CAN bus interface
- RS-485 interface
- Power with 12/24Vdc
- Self check features
- Compact design
- USB service port
- Meets the NFPA standards 99 and 110
- CE marked
- UL/cUL listed

SPECIFICATIONS

Power supply 12/24 Vdc (8 to 35 Vdc)
 Intrinsic consumption..... max. 5 W
 Ambient temp. (operation)..... -25 to 70 °C / -13 to 158 °F
 Ambient temp. (storage)..... -25 to 70 °C / -13 to 158 °F
 Ambient humidity..... 93 %, non-condensing

Relay outputs..... **potential free**
 Contact material AgSnO
 General purp. (GP) ($V_{Cont, Ro}$) AC 7.00 Aac @ 250 Vac

Interfaces.....

Service interface.....

Version USB
 Type..... Mini B

CAN bus interface **isolated**

Insulation voltage 500 Vdc
 Version CAN bus

Modbus interface..... **isolated**

Insulation voltage 500 Vdc
 Version RS-485

Display output LEDs

Free configurable outputs..... up to 16
 Connection status indication 1

Housing flush-mount

Dimensions (W x H x D)..... 185.5 x 125.5 x 41.1 mm
 Front cut-out (W x H)..... 168[+1.0] x 108[+1.0] mm
 Connection screw/plug terminals 2.5 mm²
 Tightening torque connectors 0.5 Nm
 housing clamps..... 0.3 Nm
 Weight approx. 300 g

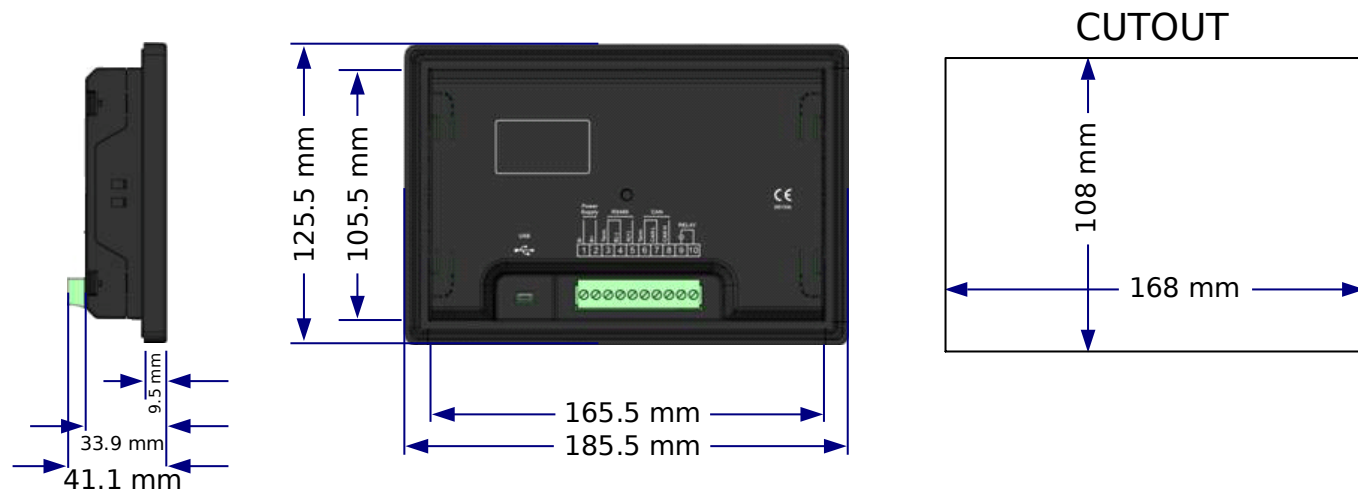
Protection.....

Protection system..... Front IP65 (with gasket)
 Back IP20

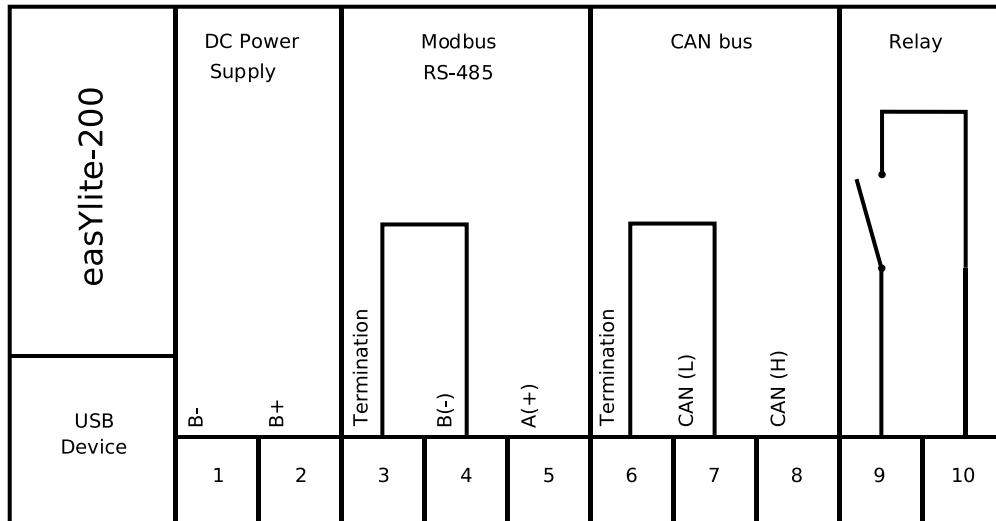
Approvals.....

EMC test (CE) tested acc. to applic. EN guidelines
 Listings CE marked; UL/cUL listed
 EAC (pending)

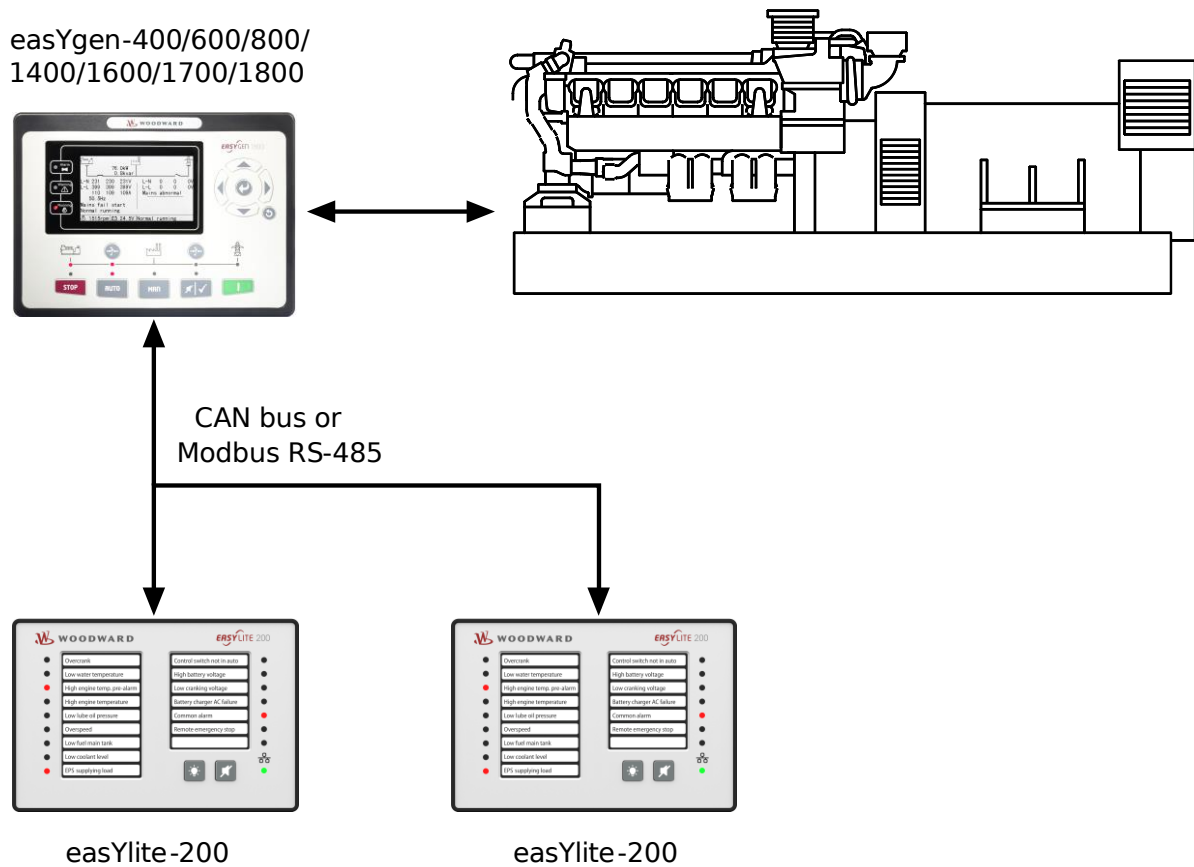
DIMENSIONS



WIRING DIAGRAM



APPLICATION EXAMPLE



easYgen-400/1400 supports CAN bus only

FEATURES OVERVIEW

CONTACT

North & Central America

Tel.: +1 (208) 278 3370


Tel.: +1 (970) 962-7272



SalesPGD_NAandCA@woodward.com

South America

Tel.: +55 19 3708 4760

 SalesPGD_SA@woodward.com

Europe

Tel. Stuttgart: +49 711 78954

510

Tel. Kempen: +49 2152 145

331

 SalesPGD_EMEA@woodward.com

Middle East & Africa

Tel.: +971 (2) 678 4424

 SalesPGD_EMEA@woodward.com

Russia

Tel.: +49 711 78954-515

 SalesPGD_EMEA@woodward.com

China

Tel.: +86 512 8818 5515



SalesPGD_CHINA@woodward.com

India

Tel.: +91 124 4399 500

 Sales_India@woodward.com

ASEAN & Oceania

Tel.: +49 711 78954 510




SalesPGD_ASEAN@woodward.com

www.woodward.com
Subject to alterations, errors
excepted.

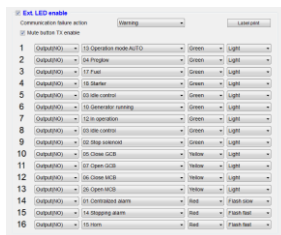
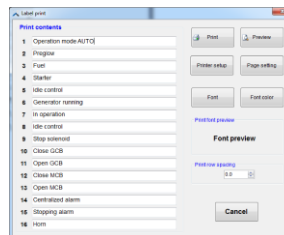
Subject to technical modifications.

This document is distributed for informational purposes only. It is not to be construed as creating or becoming part of any Woodward Company contractual or warranty obligation unless expressly stated in a written sales contract.

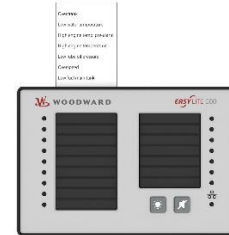
For more information contact:

		easYlite-200
Control		
LED lamp test push-button		✓
Alarm/horn silencing push-button		✓
Display		
Communication status indication LED		✓
# freely configurable LED lamps		16
LED lamps configurable for		Alarms, Warnings, Status
Differentiated signaling of LED lamps by		Color (red, green, yellow) & Pattern (blinking, continuous)
I/Os		
Relay output (configurable to Horn/Com. Fail)		1
CAN bus communication		✓
RS-485 Modbus communication		✓
USB configuration interface		✓
Accessories		
Global multi-lingual use with customized paper-strip		✓
Software		
Configuration software tool		ToolKit-SC
Devices/Application		
Supported genset controller on CAN bus		easYgen-400/600/800/1400/1600/1700/1800
Supported genset controller on Modbus RS-485		easYgen-600/800/1600/1700/1800
Number of parallel connected easYlite-200 devices		2
Listings/Approvals		
CE marked		✓
UL/cUL listing		✓
EAC listing		Pending
Part Numbers P/N		
		8446-1007

CONFIGURATION


 Configure the LED lamps
In ToolKit-SC


Print preview and adjust



Insert the print from top