



SOGAV 11/18™

MULTIPOINT GAS ADMISSION SOLUTIONS FOR
SMALL BORE HIGH SPEED GAS & DF ENGINES

VALUE PROPOSITION

SOGAV valves provide reliable and precise control of gas fuel admission in multipoint gas and dual-fuel engines. Woodward SOGAV valves are used in power generation, marine, rail and mining vehicle applications. Available in gas mass flow metering capacities ranging from 70kW/cyl to 1500kW/cyl.

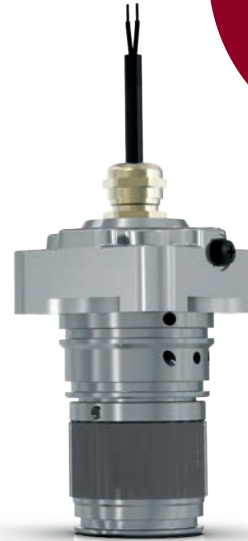
KEY PRODUCT VARIANTS



SOGAV11

The SOGAV11 gas admission valve is the smallest size SOGAV and is used in high speed stationary power generation and vehicle applications.

- Fast opening and closing behavior
- Excellent "shot to shot" performance
- Long life
- Integrated inlet filter



SOGAV18

The SOGAV18 gas admission valve is designed for marine applications. It can be easily integrated into marine double wall gas pipe systems. It's based on the SOGAV11.

- Larger gas mass flow rate (Z=18)
- Integrated leak detection
- Stainless steel
- Available with IGF-code zone "0" listing

CONTACT OUR
SALES TEAM AT:
SALES.LORANGE@WOODWARD.COM
WITH ANY
QUESTIONS

Images: Shutterstock, Woodward / All trademarks referenced herein, including WOODWARD and the Woodward logo, are registered trademarks of Woodward, Inc. or its subsidiaries

ALWAYS INNOVATING FOR A BETTER FUTURE

Woodward, Inc.

Corporate Headquarters

1081 Woodward Way, Fort Collins Colorado 80524, USA

www.woodward.com

L'Orange Fuel Injection Trading (Suzhou) Co., Ltd.

No. 116 Qingqiu Street, Suzhou Industrial Park, Suzhou 215024, Jiangsu

Tel: +86-512-6285-0935, Fax: +86-512-6285-0931

www.woodward.com

10/21 . CHIN . 500

THIS PRODUCT IS PRINTED ON 100% RECYCLED MATERIAL.