

We appreciate your comments about the content of our publications.

Send comments to: icinfo@woodward.com

Please reference publication **26023A**.



PO Box 1519, Fort Collins CO 80522-1519, USA
1000 East Drake Road, Fort Collins CO 80525, USA
Phone +1 (970) 482-5811 • Fax +1 (970) 498-3058

Email and Website—www.woodward.com

Woodward has company-owned plants, subsidiaries, and branches,
as well as authorized distributors and other authorized service and sales
facilities throughout the world.

Complete address / phone / fax / email information for all locations is
available on our website.

2013/4/Colorado



Software Manual

Woodward STS100 Interface Software

Getting Started

Manual 26044

WARNING

The engine, turbine, or other type of prime mover should be equipped with an overspeed shutdown device to protect against runaway or damage to the prime mover with possible personal injury, loss of life, or property damage.

The overspeed shutdown device must be totally independent of the prime mover control system. An overtemperature or overpressure shutdown device may also be needed for safety, as appropriate.



Read this entire manual and all other publications pertaining to the work to be performed before installing, operating, or servicing this equipment. Practice all plant and safety instructions and precautions. Failure to follow instructions can cause personal injury and/or property damage.



This publication may have been revised or updated since this copy was produced. To verify that you have the latest revision, check manual **26311**, *Revision Status & Distribution Restrictions of Woodward Technical Publications*, on the *publications* page of the Woodward website:

www.woodward.com/publications

The latest version of most publications is available on the *publications* page. If your publication is not there, please contact your customer service representative to get the latest copy.



Any unauthorized modifications to or use of this equipment outside its specified mechanical, electrical, or other operating limits may cause personal injury and/or property damage, including damage to the equipment. Any such unauthorized modifications: (i) constitute "misuse" and/or "negligence" within the meaning of the product warranty thereby excluding warranty coverage for any resulting damage, and (ii) invalidate product certifications or listings.

NOTICE

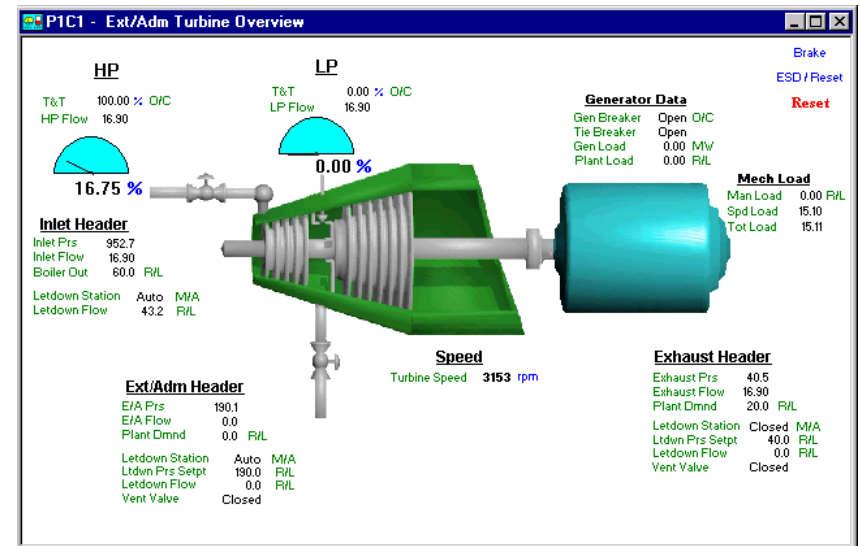
To prevent damage to a control system that uses an alternator or battery-charging device, make sure the charging device is turned off before disconnecting the battery from the system.

NOTICE

To prevent damage to electronic components caused by improper handling, read and observe the precautions in Woodward manual 82715, *Guide for Handling and Protection of Electronic Controls, Printed Circuit Boards, and Modules*.

Main Features

OpTrend® software is used to interface with Woodward STS100 simulators.



Once installed this software functions as an engineering workstation and or operator control panel to allow users to configure and service the simulator, and operate all auxiliary plant devices.

System Requirements

The computer should have a minimum of a Pentium 133 processor with Windows NT, 32MB of RAM, 10MB Hard Disk Space, 2MB Video RAM, 1.44MB floppy, 1 serial port, mouse and keyboard. Windows NT will be the standard OS and will be the only OS that is addressed in related system documentation. Microsoft Internet Explorer Ver.4.0 or newer required to view help file.

Installation Procedure

1. Insert software installation disk #1 into the disk drive and run Setup.exe from the installation diskette.
2. Follow the instructions presented during the installation.

Running the STS100 Interface Tools software

This booklet provides instructions on how to install the software. Refer to the installed on-line Help program for instructions on starting and operating the associated interface software programs. You can find the default installation location by clicking the Windows START button, then selecting PROGRAMS, then finding "Woodward STS100".

Woodward reserves the right to update any portion of this publication at any time. Information provided by Woodward is believed to be correct and reliable. However, no responsibility is assumed by Woodward unless otherwise expressly undertaken.

Copyright © Woodward 1999, All Rights Reserved

Revisions—Text changes are indicated by a black line alongside the text.