



## MotoHawk Control Solutions

### **ASM-Gage-001** **CAN-based Display Unit** (Part No. 1810-1013)

#### **Description**

Presenting the ASM-Gage-001, the CAN-Based Display Unit from Woodward's new MotoHawk Control Solutions product line. This rugged display unit is capable of operating in harsh marine and off-highway applications. Designed to operate with the MCS line of rugged controllers, the circular display (65 pixels high, 65 pixels wide, 4 built-in fonts, adjustable backlight) is controlled from the customer application via the MiniView CAN interface, and is typically programmed using the MotoHawk Control Solutions' MotoHawk® code-generation product, and its MiniView blockset. Custom gauge programming can be provided upon request. Custom bezels may also be ordered.

#### **IMPORTANT**

Woodward does not warranty this ECM based on information supplied in this datasheet, but only with an express and specific production supply agreement based on customer's operating mode. Information in this datasheet is subject to change without prior notice. Please contact MotoHawk Control Solutions sales for more information.

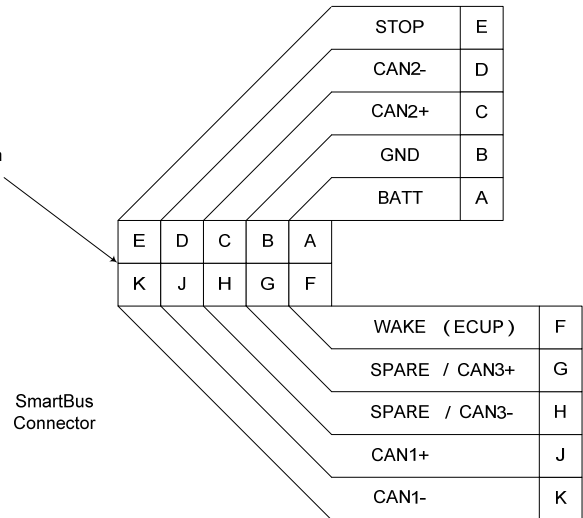
- **Microprocessor:**  
Phillips LPC2119
- **Memory:** 128K Flash, 16K RAM, 256B EEPROM
- **Operating Voltage:**  
9–16 Vdc
- **Operating Temperature:** –40 to +60 °C
- Sealed connectors available, operable to 10 ft (3 m) submerged
- **Inputs:**  
3 Discrete Switch
- **Datalinks:**  
1 CAN 2.0B Channel

## 1-Connections

### 1.1 Key\_Switch, Ground (F, B)

Key\_Switch and Ground are the power connections for the ASM-Gage-001 gage.

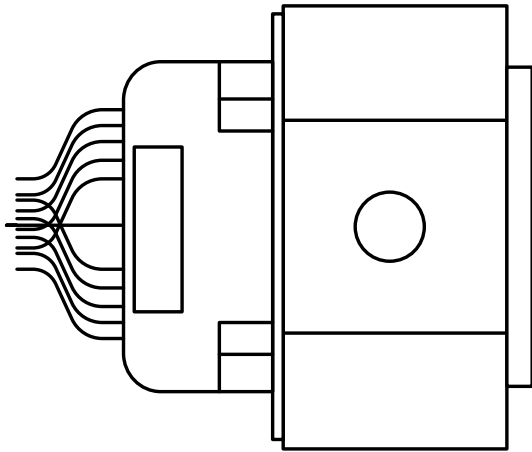
Viewed from  
mating end



### 1.2 CAN1+, CAN1- (J, K)

Gauge may be connected via C, D or G, H to operate on any of the other CAN channels as required.

## 2-Connector Definitions

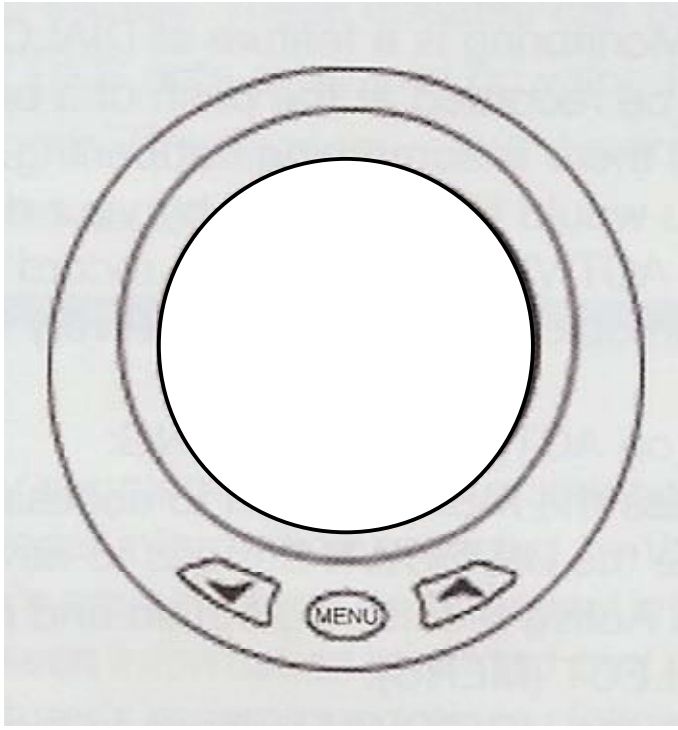


### MCS Part Numbers:

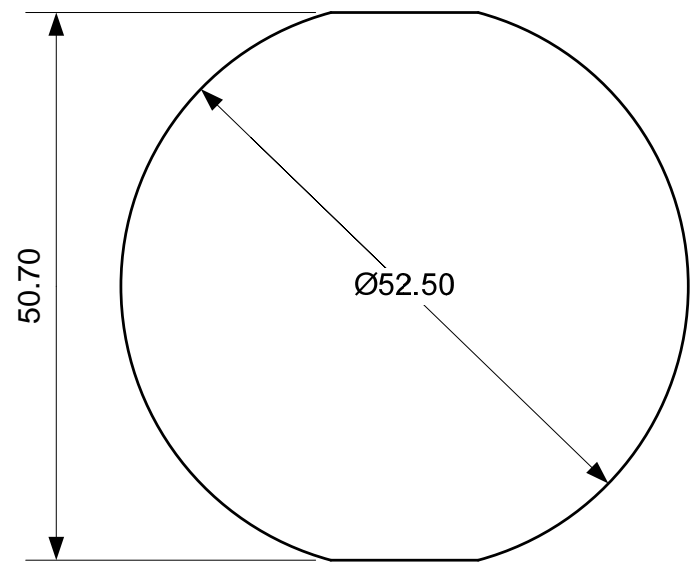
Housing	CON-FEML-006G
Terminal	CON-TMFL-009
Wire Seal	CON-SEAL-002
Cavity Plug	CON-PLUG-002
Strain Relief	CON-STRN-001
SmartCraft Connector Kit 10-pk (enough for 10 connectors)	ASM-CON-041
4-Way SmartCraft Hub	CON-JBOX-001
6-Way SmartCraft Hub	CON-JBOX-002
CAN Data Cable (10 ft/3 m)	HARN-EXT-002A
CAN Data Cable (15 ft/4.6 m)	HARN-EXT-002B
CAN Data Cable (20 ft/6.1 m)	HARN-EXT-002C
Terminated CAN Cable (10 ft/3 m)	HARN-EXT-003A
Terminated CAN Cable (15 ft/4.6 m)	HARN-EXT-003B
Terminated CAN Cable (20 ft/6.1 m)	HARN-EXT-003C
Call for longer cables.	

### 3-Physical Dimensions

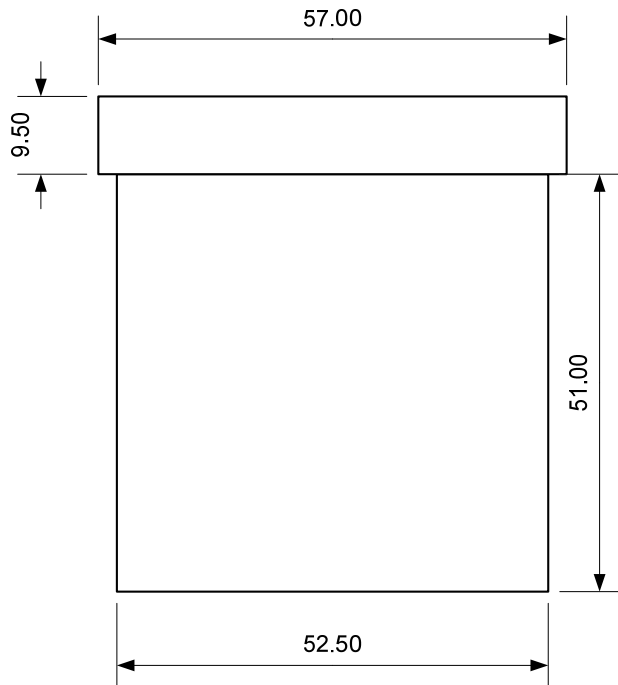
All dimensions are in millimeters.



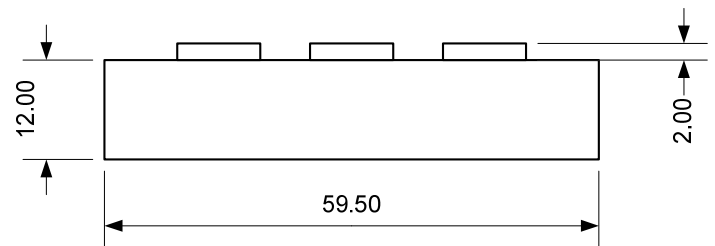
**Cut Out**



**Case**



**Bezel**



4-Environmental Ratings	
4.1 General	The ASM-Gage-001 is designed to meet the IP-X7 marine specification; sealed and waterproof, to 1 meter for 30 minutes.



PO Box 1519, Fort Collins CO, USA 80522-1519  
1000 East Drake Road, Fort Collins CO 80525  
Tel.: +1 (970) 482-5811 • Fax: +1 (970) 498-3058  
[mcsinfo@woodward.com](mailto:mcsinfo@woodward.com) • [mcs.woodward.com](http://mcs.woodward.com)  
[www.woodward.com](http://www.woodward.com)

#### Distributors & Service

Woodward has an international network of distributors and service facilities. For your nearest representative, call the Fort Collins plant or see the Worldwide Directory on our website.

This document is distributed for informational purposes only. It is not to be construed as creating or becoming part of any Woodward Governor Company contractual or warranty obligation unless expressly stated in a written sales contract.

For more information contact: