

CA 100, MI-07, Repair Kit

Installation Instructions

Woodward reserves the right to update any portion of this publication at any time. Information provided by Woodward is believed to be correct and reliable. However, no responsibility is assumed by Woodward unless otherwise expressly undertaken.

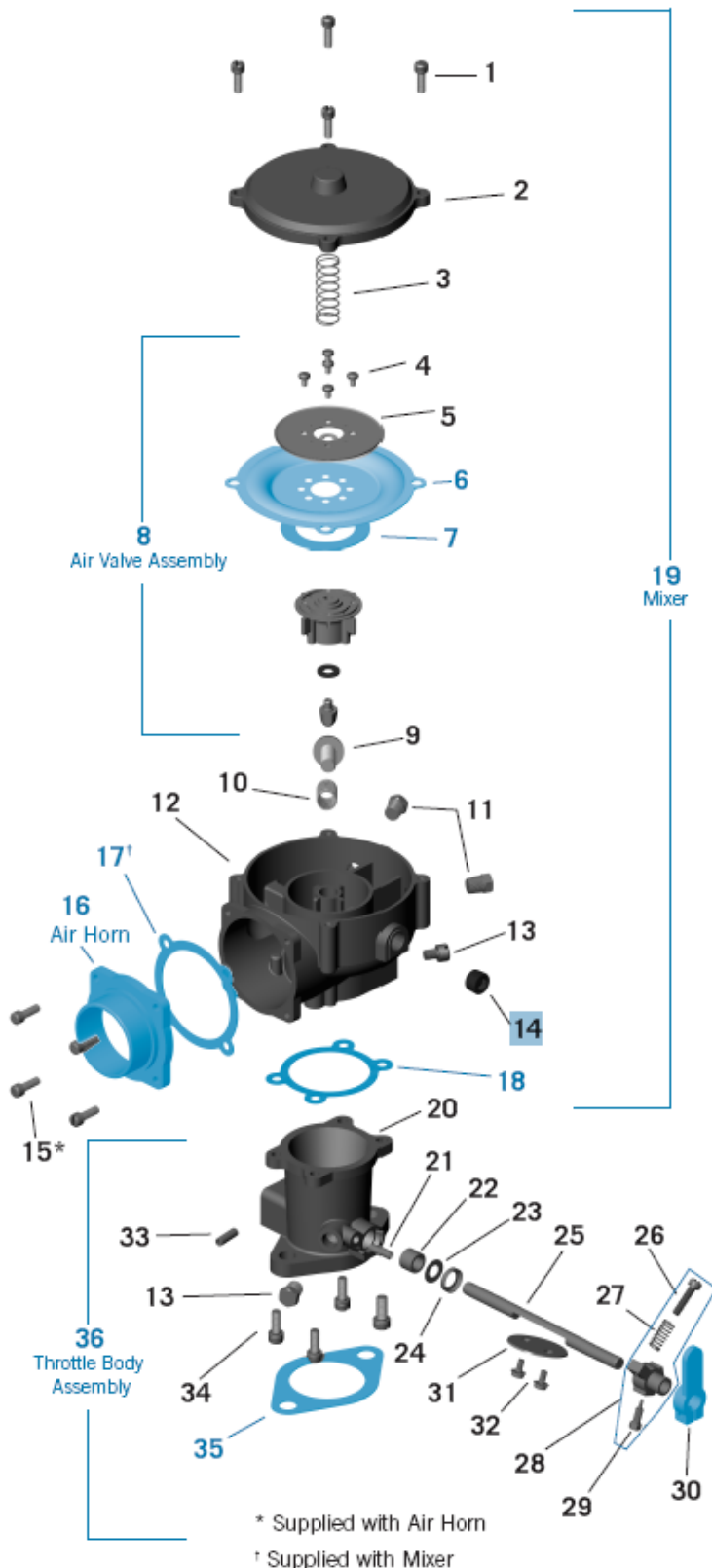
CA 100, MI-07, Repair Kit

Installation Instructions

1. Remove the four Cover Screws (1) and discard.
2. Remove the Cover (2).
3. Remove Spring (3).
4. Remove Air Valve Assembly (8) and discard.
5. Place the new Air Valve Assembly (8) into the Body (12) as shown with the arrow indicating "FUEL INLET" pointing toward the fuel inlet port.
6. Place the Spring (3) over the Air Valve Assembly (8). The bottom of the Spring should fit snugly over the machined boss on the Air Valve.
7. Replace the Cover (2) with the "Woodward" logo toward the Air Horn (16) side. The top of the Spring (3) should fit over the cast boss on the underside of the Cover.
8. Using the new Cover Screws (1) provided, secure the Cover (2) and Air Valve Assembly (8) to the Mixer Body (12). Tighten the screws to 1.7–2.0 N·m (15–18 lb-in) using a crossing torque pattern.

IMPORTANT

After air valve assembly replacement, the mixer idle screw and power valve settings may require adjustment to obtain desired engine performance and/or emissions requirements.



We appreciate your comments about the content of our publications.

Send comments to: icinfo@woodward.com

Please reference publication **51307.**



PO Box 1519, Fort Collins CO 80522-1519, USA
1000 East Drake Road, Fort Collins CO 80525, USA
Phone +1 (970) 482-5811 • Fax +1 (970) 498-3058

Email and Website—www.woodward.com

**Woodward has company-owned plants, subsidiaries, and branches,
as well as authorized distributors and other authorized service and sales facilities throughout the world.**

Complete address / phone / fax / email information for all locations is available on our website.