

# ProAct™ I and II

## Digital Electric Powered Governor Systems

### Applications

The ProAct™ digital control system is an electric powered governor system designed to provide precise electronic control and limiting for gas and diesel engines.

ProAct I is designed for direct coupling to the butterfly valve shaft on small gas engines or for diesel engines which require less than 1.4 N·m (1.0 lb-ft) of torque to move the rack. ProAct II is designed for control of most diesel engines and larger carbureted gas engines.



### Description

The ProAct control system is a combination of a 32-bit microprocessor control and a limited-angle rotational torque motor (actuator). The system features user-friendly menus to provide extreme flexibility in the development of special control schemes for different types of engines.

Two different ProAct actuators are available. The ProAct I actuator provides 1.4 N·m (1.0 lb-ft) of torque in steady state and 3.55 J (2.62 ft-lbs) of work over 75° of travel. The ProAct II provides 2.7 N·m (2.0 lb-ft) of torque in steady state and 7.11 J (5.24 ft-lbs) of work over the 75° of rotation.

The control has two complete sets of dynamic adjustments to aid when operating with such conditions as two different fuels, or in parallel/stand-alone electrical generation. A four-slope gain schedule is available in each set of dynamics. This permits programming for extremely responsive yet extremely stable operation of carbureted engines. Adjustment of the ProAct control is done through the use of a PC service tool, communicating to the ProAct via CAN. The software-based service tool allows access to all of the tunable settings. The service tool PC CAN adapter is a separate device and will normally be unplugged and removed during governor system operation. This provides security against unauthorized tampering with system adjustments. The control may be tuned or monitored during setup with the PC service tool, if desired.

### Standard Features

The ProAct digital electronics include settings for either droop or isochronous operation. Start, idle, and rated speeds may be set. Separate droop schedules are available for rated and idle. Variable speeds may be controlled by external input. The rates that the speed setting can be raised or lowered may also be adjusted. Fuel limits may be imposed for No Load, Full Load, Start-up (start-fuel limit), and Idle speed. A two-slope torque limit is available. Separate ramp times may be established for acceleration and deceleration. Speeds for rated, idle, raise limit, and lower limit are also easily preset

- 75° rotary output allows direct coupling to butterfly, eliminating linkage
- All-electric actuator requires no drive or hydraulic supply
- Programmable digital electronics permit tailoring control to various applications
- Actuators are extremely fast, electronically positioned in both directions
- Alternate dynamics for dual fuel applications or co-gen/standby
- 3 speed-activated switches
- Start fuel limit and maximum fuel limit for derating
- Manifold pressure fuel limiting
- Two-slope torque limiting

## Specifications

---

### Actuator

**Output Shaft:** 0.500-36 inch serration on output shaft. Opposite side used for feedback device. (Other configurations available upon request.)

**Operating Temperature Range:** –40 to +100 °C (–40 to +212 °F) operating environment. Contact Woodward for extreme temperature installation procedures.

**Feedback:** Brushless Hall Effect feedback device directly connected to actuator shaft.

**Installation:** May be mounted on 2.250 inch (57.15 mm) diameter male pilot concentric to the terminal shaft using four bolts through the actuator or with four 0.312-18 inch bolts into the base (M8-6H metric optional). The actuator may be mounted in any attitude.

May be connected directly to butterfly shaft, or may be linked to rack or valve.

**Weight:** The ProAct I and ProAct II actuators each weigh 6.9 kg (15.25 lbs).

**Construction:** All external surfaces are resistant to water and salt water corrosion. Actuator is waterproof at normal water hose pressure and meets IP54 rating. Do not high-pressure wash.

**Vibration and Shock Tested:** Tested to US MIL-STD-810C.

**MIN Fuel Return Spring:** The actuator is equipped with a light spring return toward min fuel to prevent drift in case of position signal interruption. Normal operating conditions do not require spring return, as the actuator is powered in both the increase and decrease directions.

**Direction of Rotation:** All models are capable of either clockwise or counterclockwise rotation to increase fuel.

### Control

**Operating Temperature Range:** –40 to +70 °C (–40 to +158 °F) operating environment.

**Speed:** Dynamics maps are field selectable for either low speed (8–300 rpm) or high speed (300–2100 rpm).

**Dynamics:** Two menus for engine dynamics are switch-selectable for alternate fuel, alternate loads, etc. Four different gain settings in each dynamics menu tailor governor response to various conditions depending on load or non-linearity in the fuel control system.

**Limiters:** Limiters set minimum, idle, and maximum fuel settings, and minimum and maximum torque schedules. Two-slope torque limit schedule with program-selected breakpoint is available. Up to 3 start fuel limiter levels are available.

**Speed Switches:** Three speed switches are included with programmable on and off positions according to engine speed. The switches may be used to indicate cranking, idle, rated, or overspeed operation. Switch output is 500 mA when closed. Increase-speed trip points may vary from decrease-speed trip points.

**Droop:** Two droop schedules are available, with a programmable switch point between idle droop and rated droop.

**Speed Reference:** Programmable minimum and maximum limiters with 4–20 mA remote reference to raise and lower the rated speed. Rate of change of speed reference may be programmed with different rates for raise and lower.

**Accel and Decel Ramps:** Acceleration and deceleration times may be programmed to protect engines from damage or to protect processes from sudden changes.

**Supply Voltage Range:**

10–32 Vdc for ProAct I

18–32 Vdc for ProAct II

**Technical Manual:** 35131

## Regulatory Compliance

Listings are limited only to those units bearing the appropriate marking or agency identification.

### Control

European Compliance for CE Marking:

EMC Directive: 2014/30/EU

Restriction of Hazardous Substances Directive: 2011/65/EU

### Actuator

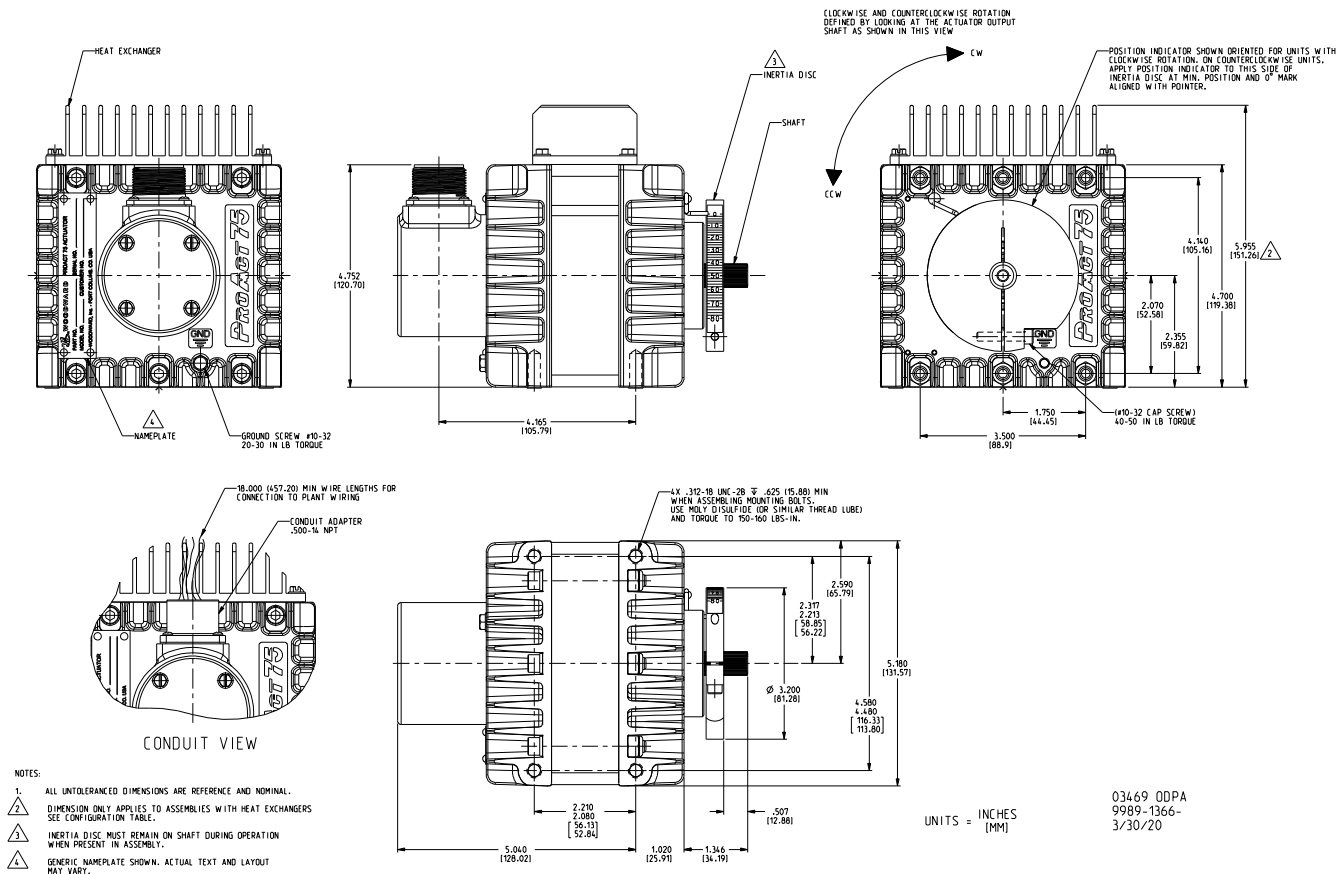
Other European Compliance:

Compliance with the following European directives or standards does not qualify this product for application of the CE Marking.

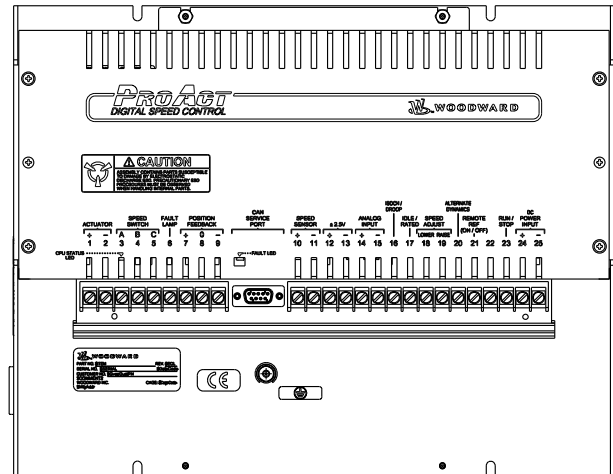
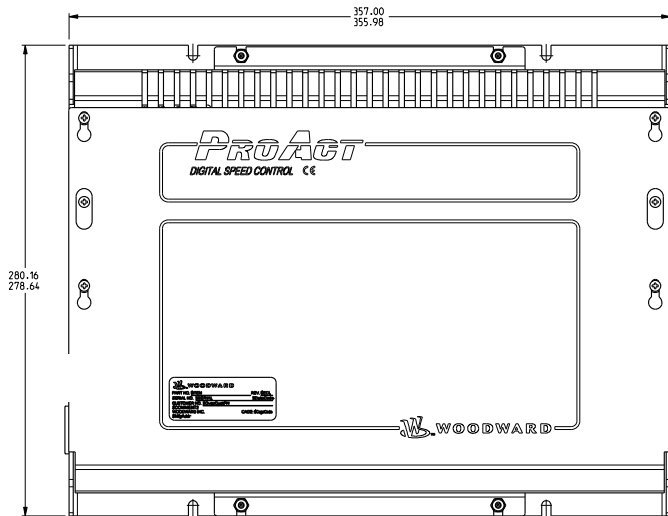
Restriction of Hazardous Substances Directive: 2011/65/EU

Machinery Directive: Compliant as partly completed machinery per 2006/42/EC

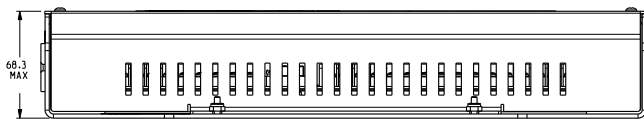
## Outline Drawings



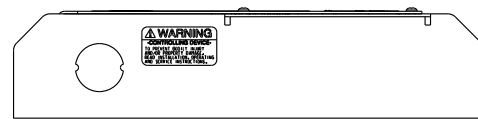
Outline Drawing of ProAct I or II Actuator



OUTER COVER NOT SHOWN FOR DRAWING CLARITY



03469 000  
9989-1400-  
2/24/00



**Outline Drawing of ProAct Driver**  
(Do not use for construction)



PO Box 1519, Fort Collins CO, USA 80522-1519  
1041 Woodward Way, Fort Collins CO 80524  
Tel.: +1 (970) 482-5811  
[www.woodward.com](http://www.woodward.com)

#### Distributors & Service

Woodward has an international network of distributors and service facilities. For your nearest representative, call the Fort Collins plant or see the Worldwide Directory on our website.

This document is distributed for informational purposes only. It is not to be construed as creating or becoming part of any Woodward contractual or warranty obligation unless expressly stated in a written sales contract.

Copyright © Woodward 2020, All Rights Reserved

For more information contact:

